



United Federation of Teachers
A Union of Professionals

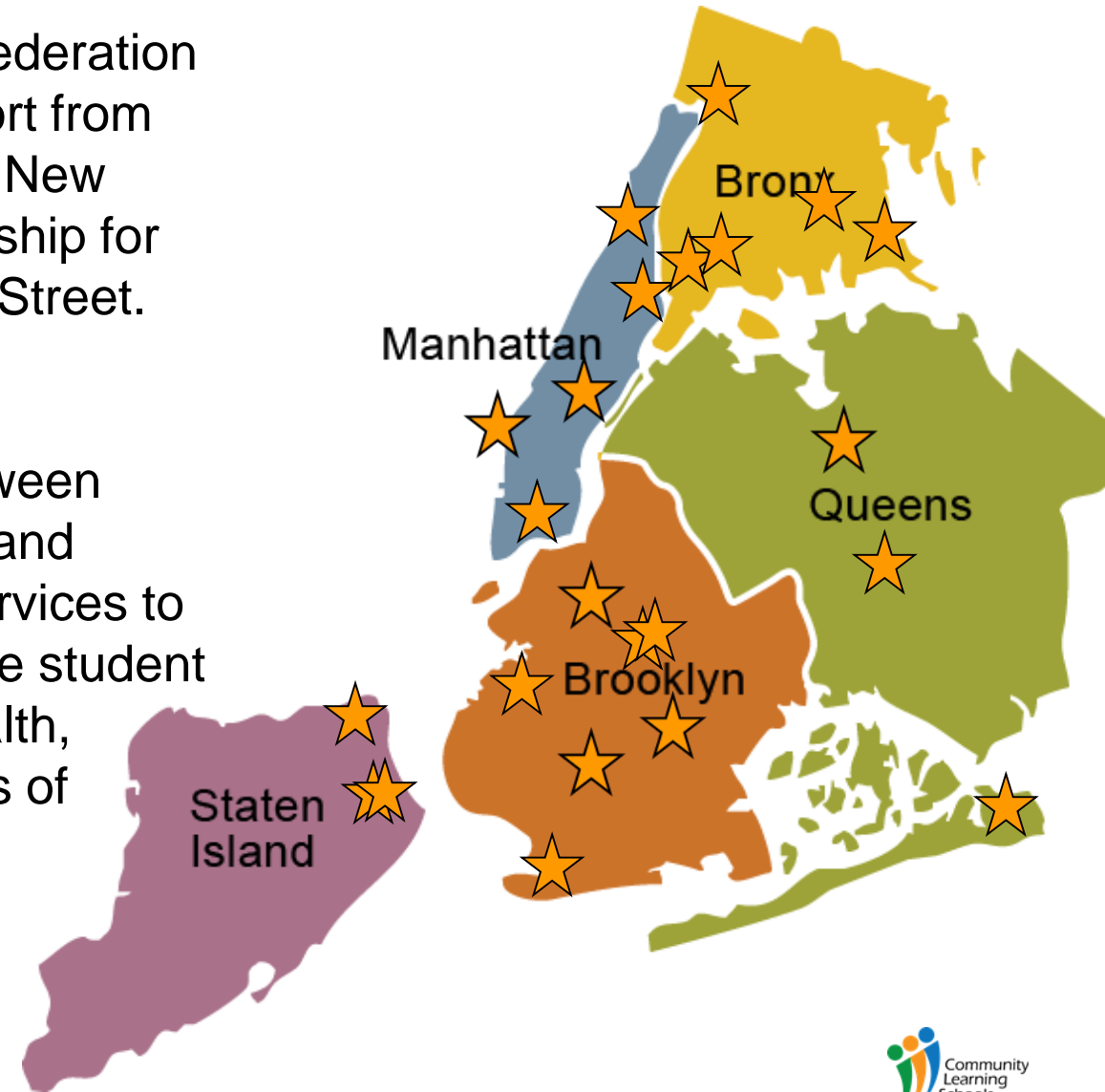
The New York City Community Learning Schools Initiative

www.nyccls.org

The New York City Community Learning Schools Initiative

Was launched by the United Federation of Teachers in 2012 with support from the New York City Council, the New York State Senate, the Partnership for New York City and Trinity Wall Street.

We **facilitate** partnerships between schools, non-profits, business and government to connect vital services to public school buildings, improve student achievement and meet the health, safety and social service needs of students and communities.

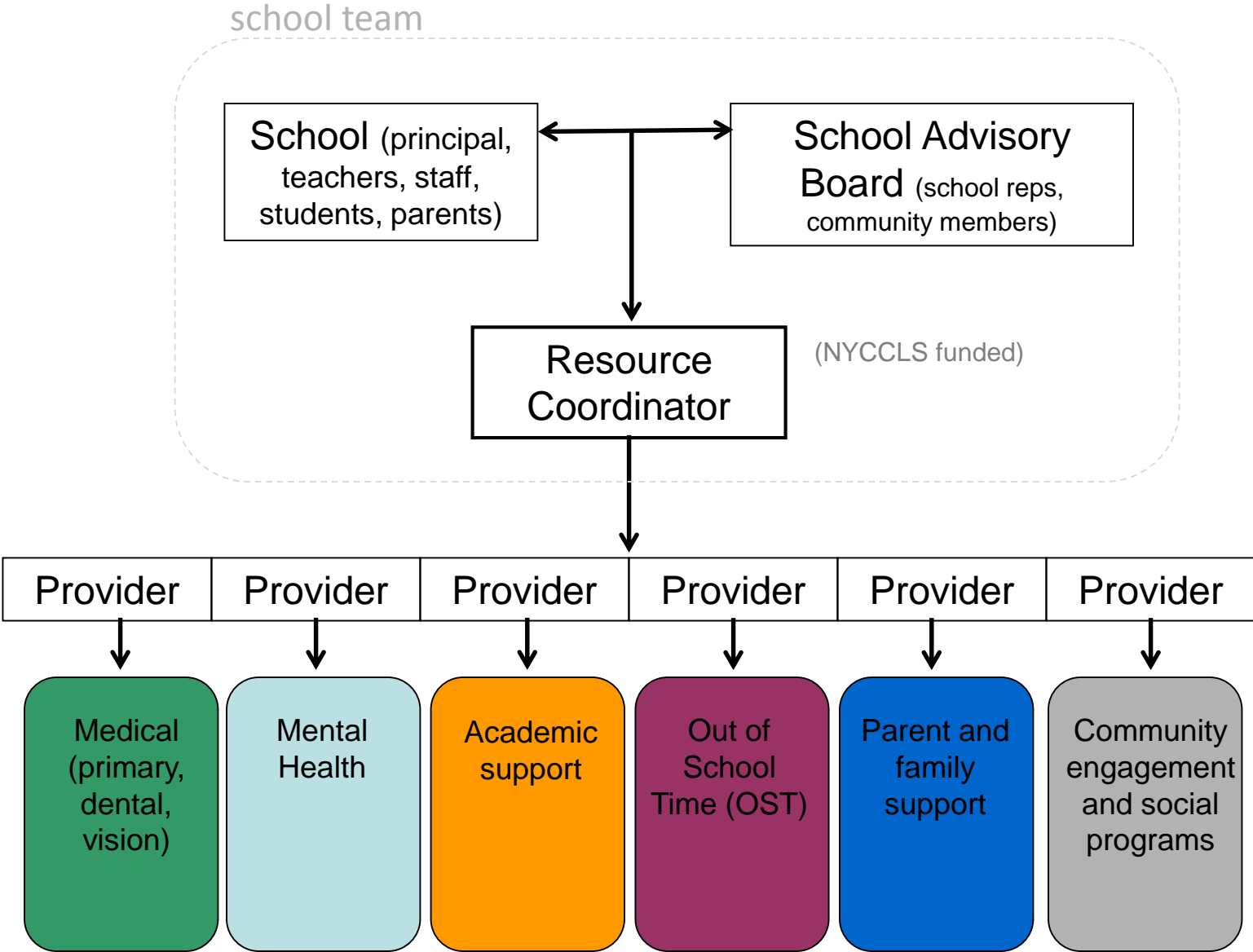


Our 24 Community Learning Schools

*indicates a colocation

| Borough | School | Grade Levels | | | | Demographics | | |
|----------------------|---|--------------|-----|-----|------|--------------|------------------|-----|
| | | Pre-K | K-5 | 6-8 | 9-12 | Total | Free / Re. Lunch | ELL |
| BRONX | | | | | | | | |
| | PS 14 | | X | | | 607 | 62% | 5% |
| | PS 18 | X | X | | | 544 | 92% | 22% |
| | PS 83 | | X | X | | 1685 | 100% | 11% |
| | International School For Liberal Arts* | | | X | X | 543 | 98% | 74% |
| | Bronx Writing Academy* | | | X | | 497 | 92% | 30% |
| BROOKLYN | | | | | | | | |
| | PS 188 | X | X | | | 540 | 100% | 4% |
| | PS 335* | X | X | | | 375 | 92% | 4% |
| | MS 584* | | | X | | 128 | 98% | 6% |
| | PS 158 | X | X | | | 552 | 89% | 7% |
| | Gotham Professional Arts Academy* | | | | X | 242 | 100% | 1% |
| | PS 156* | X | X | | | 784 | 91% | 3% |
| | PS/IS 184 | X | X | X | | 571 | 93% | 3% |
| | IS 96 | | | X | | 711 | 100% | 25% |
| MANHATTAN | | | | | | | | |
| | PS 1 | X | X | | | 496 | 100% | 33% |
| | PS 30* | X | X | | | 295 | 93% | 14% |
| | Community Health Academy of the Heights | | | X | X | 600 | 91% | 29% |
| | PS/MS 149* | X | X | X | | 339 | 87% | 8% |
| | PS 811* | X | X | X | | 336 | 85% | -- |
| QUEENS | | | | | | | | |
| | PS 65 | | X | | | 508 | 100% | 8% |
| | Queens High School for Information, Research, and Technology* | | | | X | 322 | 80% | 14% |
| | PS 19 | | X | | | 1961 | 100% | 59% |
| STATEN ISLAND | | | | | | | | |
| | PS 14* | | X | | | 200 | 93% | 11% |
| | PS 78* | X | X | | | 503 | 96% | 9% |
| | Curtis High School | | | | X | 2396 | 72% | 6% |

Inside a Community Learning School



How It Works

Needs assessment

teachers + parents + students + administrators + community

Planning

vision + assess needs + prioritize + assess current programs / assets + strategy

Resource coordinator

find partners + coordinate + outreach + enroll + oversee

School advisory board

principal + 2 teachers + 2 non-teaching staff + 2 parents + 2 community members / cbo's

Portfolio of programs and services

academic support + arts & recreation + health + mental health + nutrition & wellness + literacy & skill building + social supports & services + school capacity building



NYCCLS Team

NYCCLS Staff

- Director of Planning and Implementation
- Director of Policy
- Education Liaison
- 16 Resource Coordinators

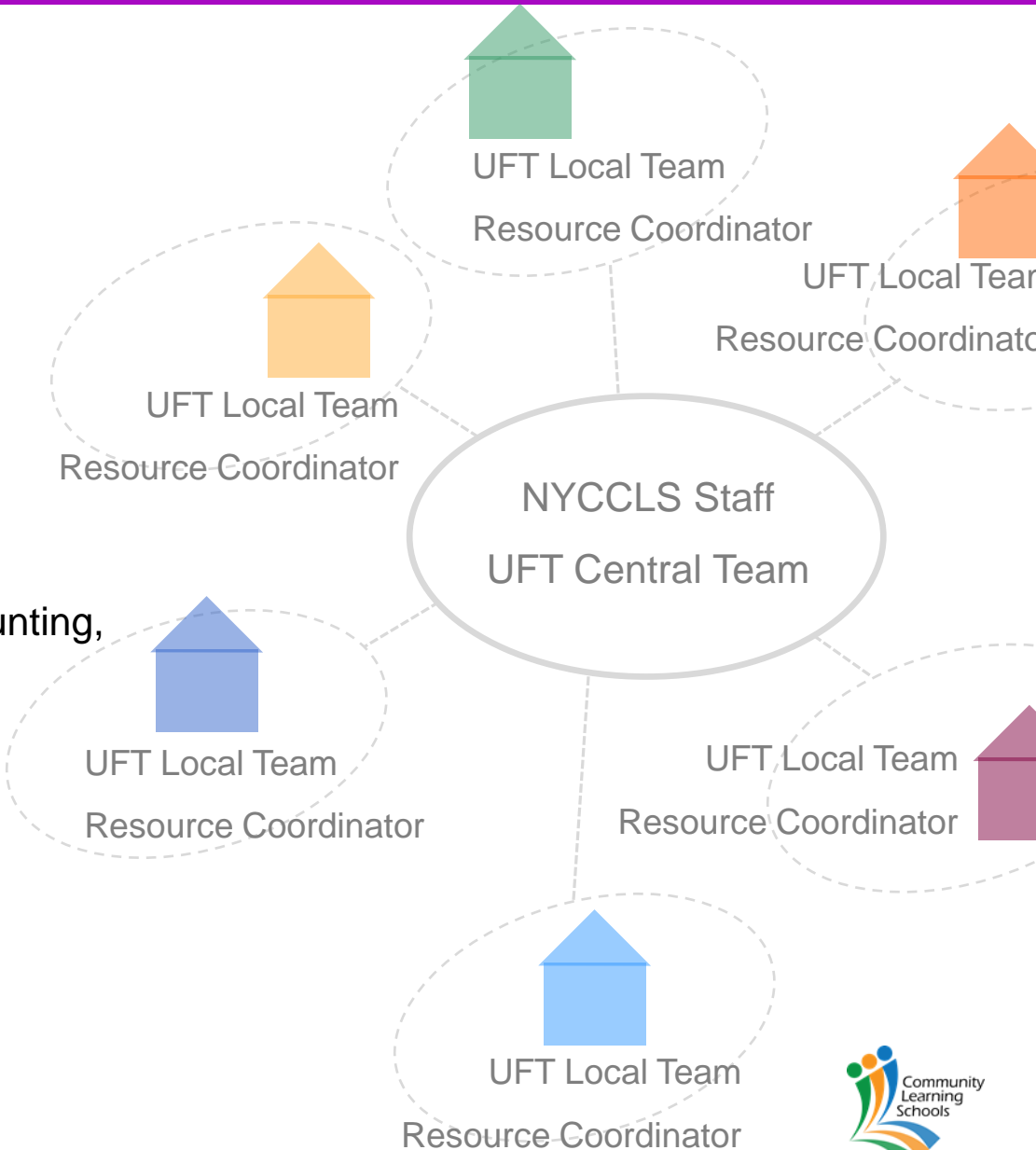
UFT Central Team

- UFT VP of Elementary Schools
- UFT Staff Director
- UFT COO
- UFT Teacher's Center
- UFT Researcher
- UFT support: political action, legal, accounting, graphics, communications

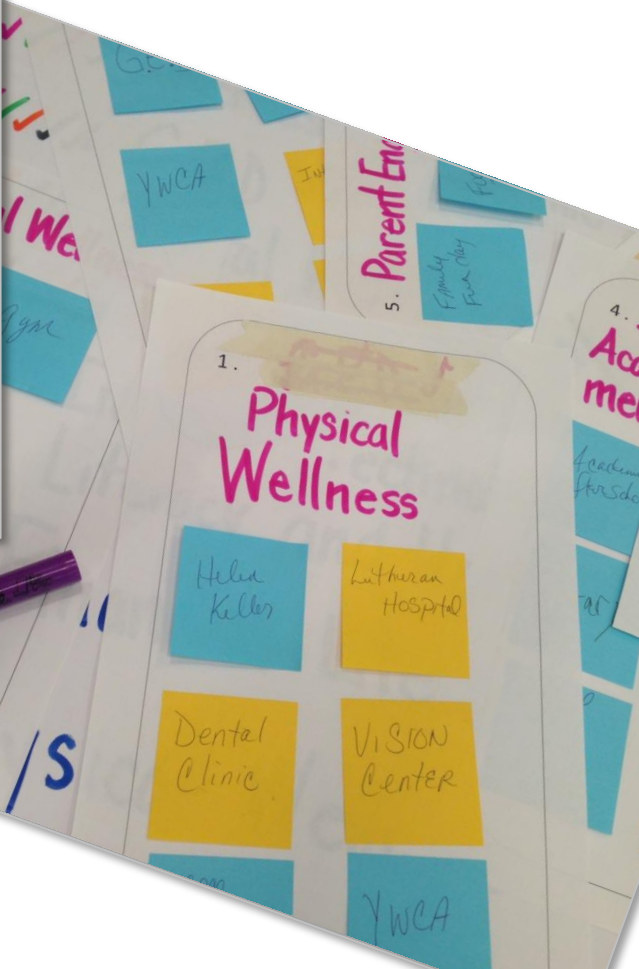
UFT Local Teams (community-based)


- Chapter Leader
- District Rep
- Borough Rep
- Parent Outreach Rep
- Teacher's Center
- Community member

Resource Coordinator

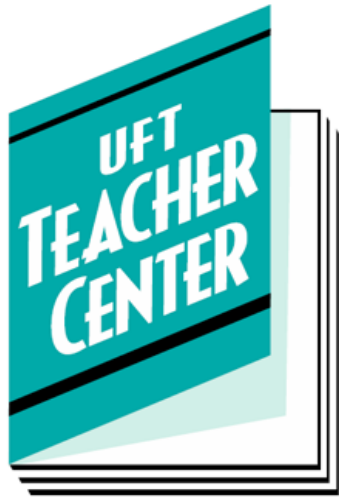


Professional Development and Technical Assistance




PS 30M is a Community Learning
School where all parents, educators &
students work together for the benefit
of our whole community. We strive
to collaborate on programs that enrich
individuals & ~~students~~ citizens of society.

Our Key Partners



Montefiore





STRENGTHENING SCHOOLS,
STRENGTHENING COMMUNITIES:

THE PROMISE OF COMMUNITY SCHOOLS

A POLICY FRAMEWORK
DESIGNED BY
**THE NEW YORK CITY
COMMUNITY SCHOOLS COALITION**

MAY 2013

Christine Schuch
Director of Policy

cschuch@uft.org

212-701-9602